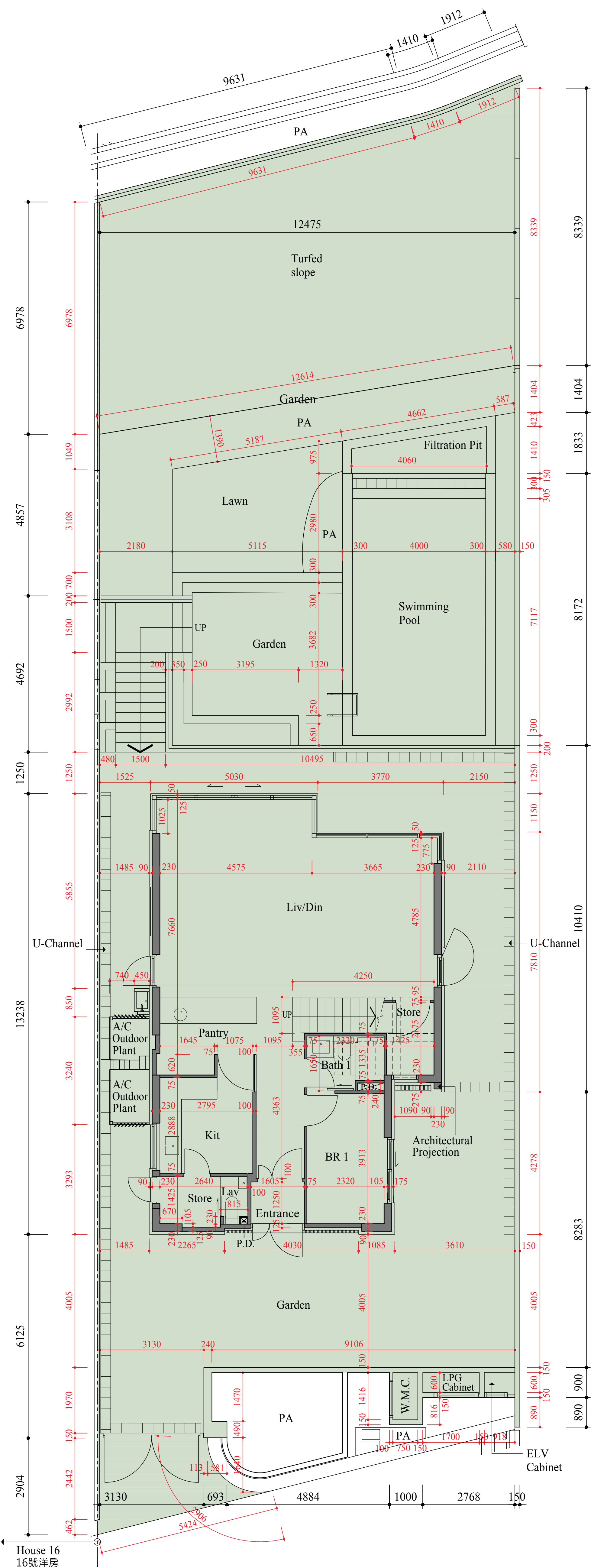
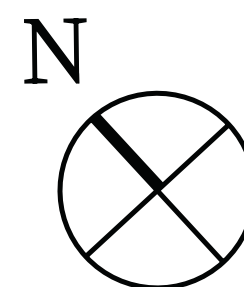
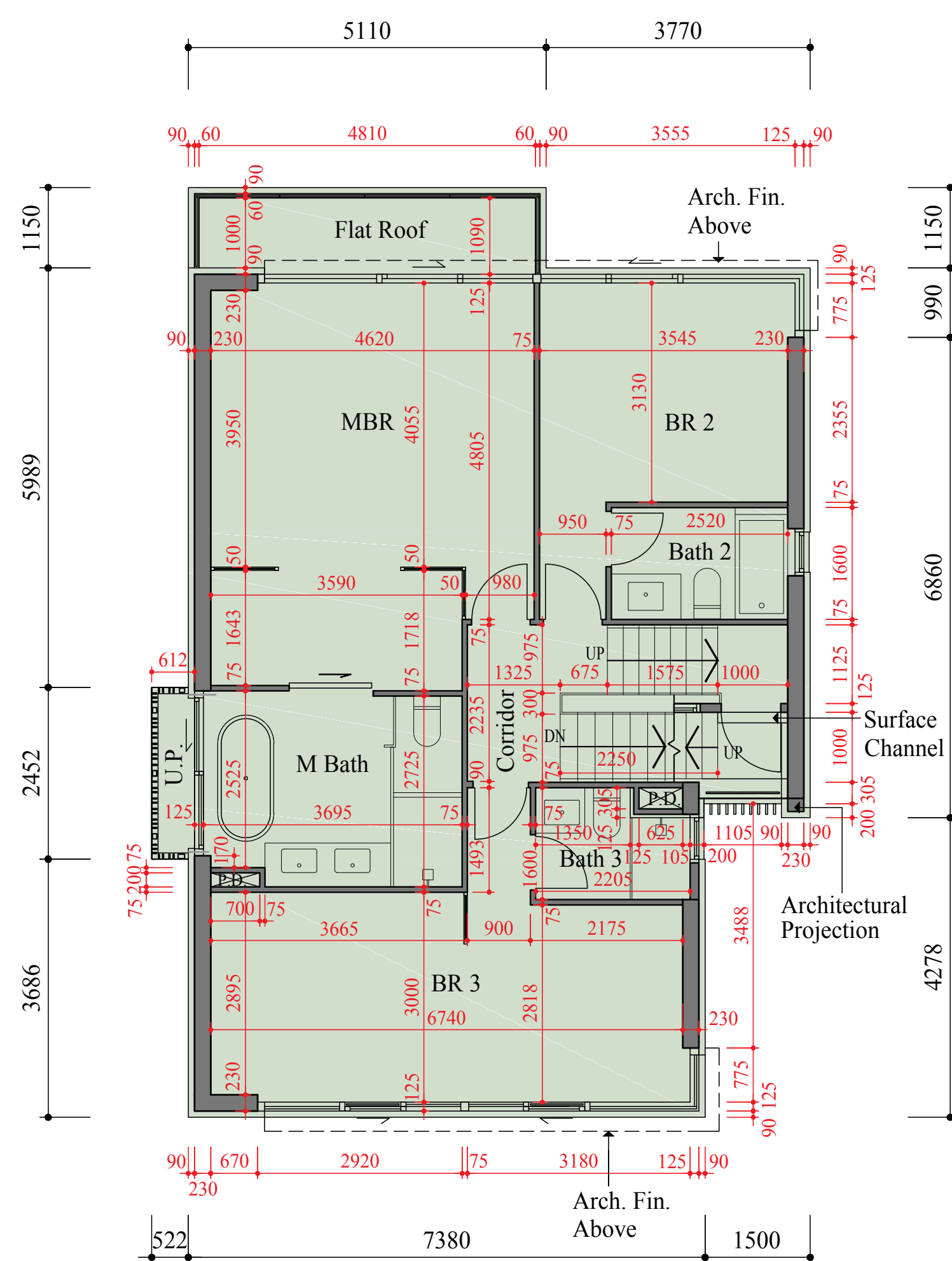


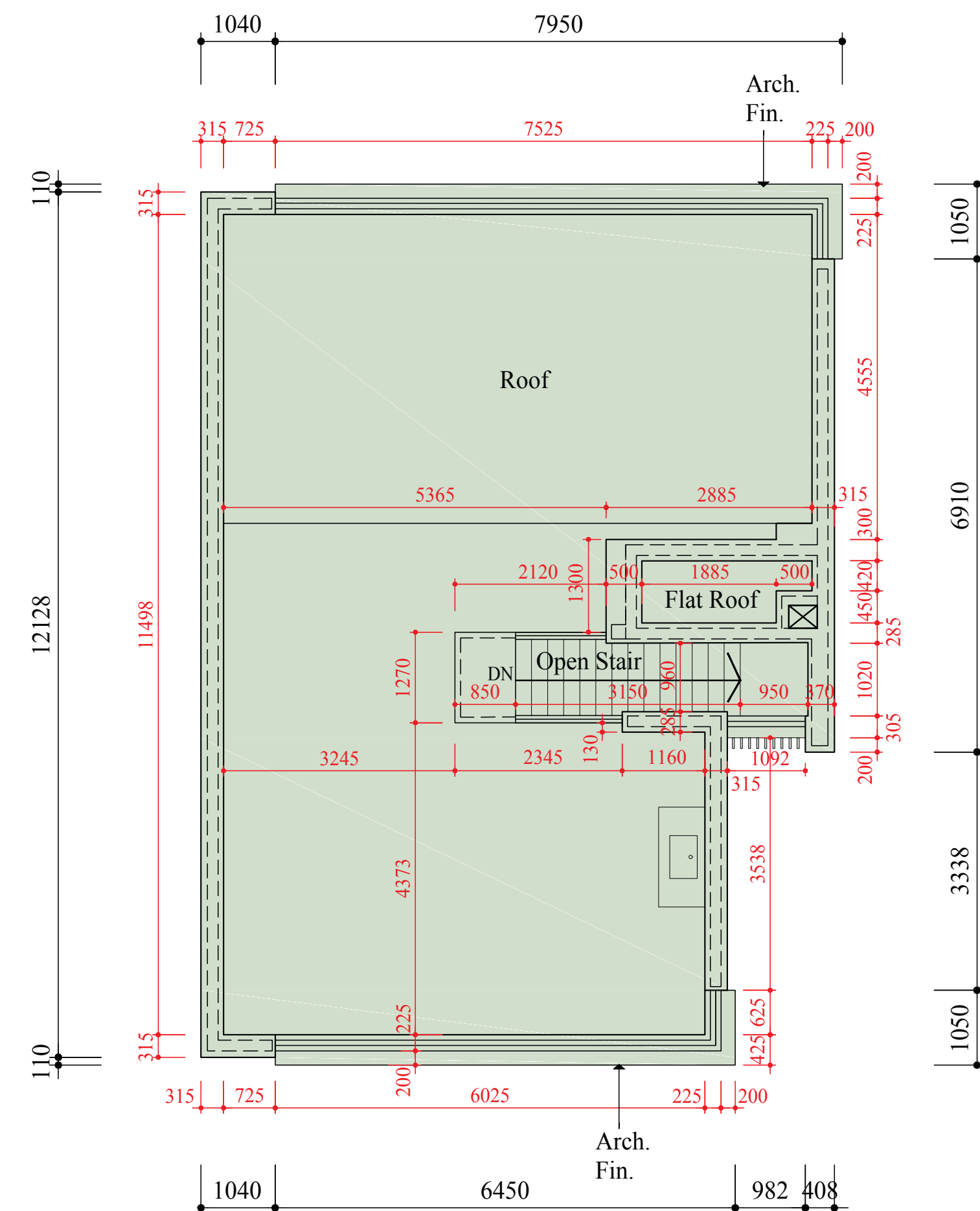
## HOUSE 15 15 號洋房



**G/F FLOOR PLAN**  
地下樓面平面圖



**1/F FLOOR PLAN**  
一樓樓面平面圖



**ROOF PLAN**  
天台平面圖

Scale: 0M/米 5M/米  
比例: 1:500

實用面積 Saleable Area	平台 Flat Roof	花園 Garden	天台 Roof	梯屋 Stairhood
(包括露台, 工作平台及陽台(如有)) (including balcony, utility platform and verandah, if any)				
平方呎 (平方米) sq. ft. (sq. metre)	平方呎 (平方米) sq. ft. (sq. metre)	平方呎 (平方米) sq. ft. (sq. metre)	平方呎 (平方米) sq. ft. (sq. metre)	平方呎 (平方米) sq. ft. (sq. metre)
<b>2,171</b> <b>(201.676)</b>	<b>53</b> <b>(4.965)</b>	<b>3,678*</b> <b>(341.738)*</b>	<b>850</b> <b>(79.004)</b>	<b>20</b> <b>(1.850)</b>

**Legend 圖例**

A/C Outdoor Plant = 室外冷氣機	LPG Cabinet = LPG Cabinet	石油氣箱
Arch. Fin. = Architectural Fins = 建築裝飾	M Bath = Master Bathroom = 主人浴室	
Arch. Fin. Above = Architectural Fins Above = 上層建築裝飾	MBR = Master Bedroom = 主人睡房	
Architectural Projection = Architectural Projection = 建築伸出物	Filtration Pit = Filtration Plant Pit = 過濾機井	
BR = Bedroom = 睡房	Open Stair = Open Staircase = 開放式樓梯	
Bath = Bathroom = 浴室	PA = Planter = 花槽	
Corridor = Corridor = 走廊	Pantry = Pantry = 備餐間	
Din = Dining Room = 飯廳	P.D. = Pipe Duct = 管槽	
DN = DOWN = 落	Roof = Roof = 天台	
ELV Cabinet = Extra Low Voltage Cabinet = 弱電箱	Store = Store Room = 儲物室	
Entrance = Entrance = 入口	Surface Channel = Surface Channel = 水渠	
Flat Roof = Flat Roof = 平台	Swimming Pool = Swimming Pool = 泳池	
Garden = Garden = 花園	Turfed slope = Turfed Slope = 斜坡草坪	
Kit = Kitchen = 廚房	U.P. = Utility Platform = 工作平台	
Lav = Lavatory = 洗手間	U-Channel = U-Channel = U型水渠	
Lawn = Lawn = 草坪	UP = UP = 上	
Liv = Living Room = 客廳	W.M.C. = Water Meter Cabinet = 水錶櫃	

**Notes:**

- According to the latest approved building plans of the Phase, there is no internal partition(s) between Bedroom 3 and Family Room of House 15. Such design is not applicable and may not be feasible for/in other residential properties.
- There may be architectural features and/or exposed pipes on external walls and/or windows of the residential units. For details, please refer to the latest approved building plans.
- Drainage pipes enclosed in cladding are located adjacent to utility platform of the residential units. Also, drainage pipes will run through the flat roof and/or roof of the residential units.
- The condensers of the VRV air-conditioners are installed on A/C outdoor plant area.
- There are ceiling bulkheads in living/dining rooms, bedrooms, store rooms, corridors and/or kitchens of the residential units for the air-conditioning system and/or M&E services.
- The internal ceiling height within residential units may vary due to structural, architectural and/or decoration design variations.
- Some louvers that are installed at false ceilings may not be indicated on the floor plans.
- Utility platform is a non-enclosed area.
- Symbols of fittings and fittings such as bathtub, sink, water closet, shower, sink counter, etc. are prepared based on the latest approved building plans and are for general indication only.
- The saleable area and the floor area of balcony, utility platform and verandah are calculated in accordance with section 8 of the Residential Properties (First-hand Sales) Ordinance.
- The area of other specified items is calculated in accordance with part 2 of schedule 2 to the Residential Properties (First-hand Sales) Ordinance.
- Areas in metres as specified in the above are calculated in accordance with the latest approved building plans. Areas in square feet are converted at a rate of 1 square metre to 10.764 square feet and rounded to the nearest square feet.
- The dimensions in the floor plan are all structural dimensions in millimeter.
- The floor plan is for reference only. Please refer to the Sales Brochure for details.
- Includes the area of swimming pool and filtration pit.

**備註:**

- 根據期數最新批准的建築圖則, 15號洋房睡房3及起居室之間並無內部間隔。此設計於其他住宅物業並不適用及可能不可行。
- 住宅單位外牆及/或窗戶設有建築裝飾及/或外置喉管, 詳細資料請參考最新批准的建築圖則。
- 住宅單位的工作平台側之外牆裝飾板內設有喉管, 喉管亦安裝於住宅單位之平台及/或天台內。
- VRV分體式空調冷氣機之冷凝器設於室外冷氣機裝置區。
- 住宅單位客廳/飯廳、睡房、儲物室、走廊及/或廚房的裝飾板裝置冷氣喉管及/或其他機電設備。
- 住宅單位的天花高度將會因應其結構、建築設計及/或裝修設計上的需要而有差異。
- 部份百葉窗安裝於假天花且沒有於平面圖顯示。
- 工作平台為不可封閉的地方。
- 樓面平面圖上所顯示的裝置符號, 如浴缸、洗滌盆、座廁、花灑、洗滌盆櫃等乃按最新的經批准的建築圖則繪製, 只作一般示意用途。
- 實用面積及露台、工作平台及陽台的面積是按照《一手住宅物業銷售條例》第8條計算得出的。
- 其他指明項目的面積是按照《一手住宅物業銷售條例》附表2第2部計算得出的。
- 上述所列以平方米顯示之面積乃依據最近的批准建築圖則計算, 以平方米顯示面積均依據1平方米 = 10.764平方呎換算, 並四捨五入至整數。
- 平面圖所列之數字為以毫米標示之建築結構尺寸。
- 平面圖僅供參考, 詳情請參閱售樓說明書。
- 包括泳池及過濾機井的面積。